

Ciência e Tecnologia do BioEtanol





Centro Nacional de Pesquisa em Energia e Materiais





Laboratórios Nacionais



Laboratório Nacional de Luz Síncrotron



Laboratório Nacional de Biociências



Laboratório Nacional de Ciência e Tecnologia do Bioetanol



Laboratório Nacional de Nanotecnologia



Desvendando a Estrutura da Matéria



Excelência Científica, Desenvolvimento Tecnológico e Apoio à Inovação



Ciência Básica e Inovação Tecnológica em Bioenergia



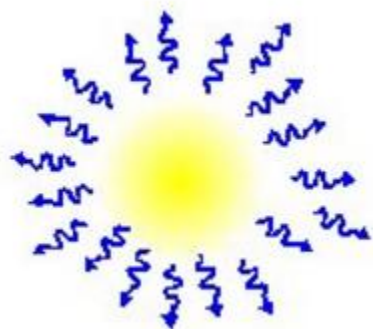
Nanociência, Tecnologia e Inovação para o Desenvolvimento Sustentável

can you imagine Penrith without oil...?!

virtually everything in the modern world is either made from oil derivatives, or uses oil-based energy to produce and transport it

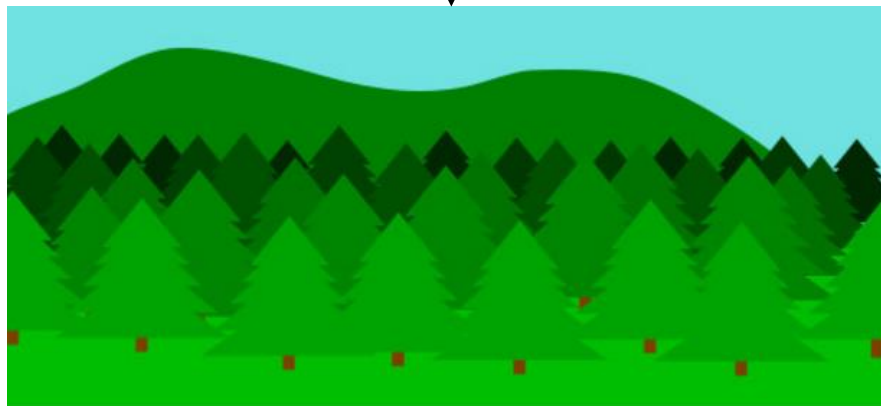


O Petróleo é Renovável

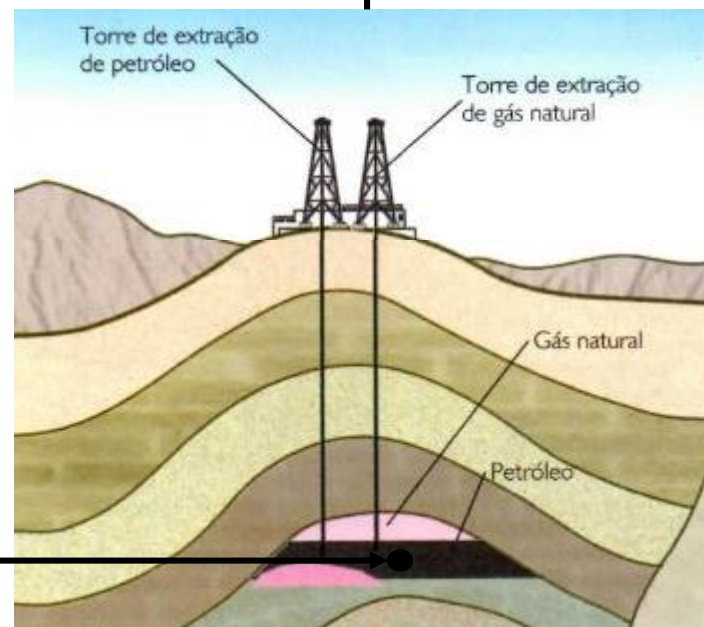


CO₂

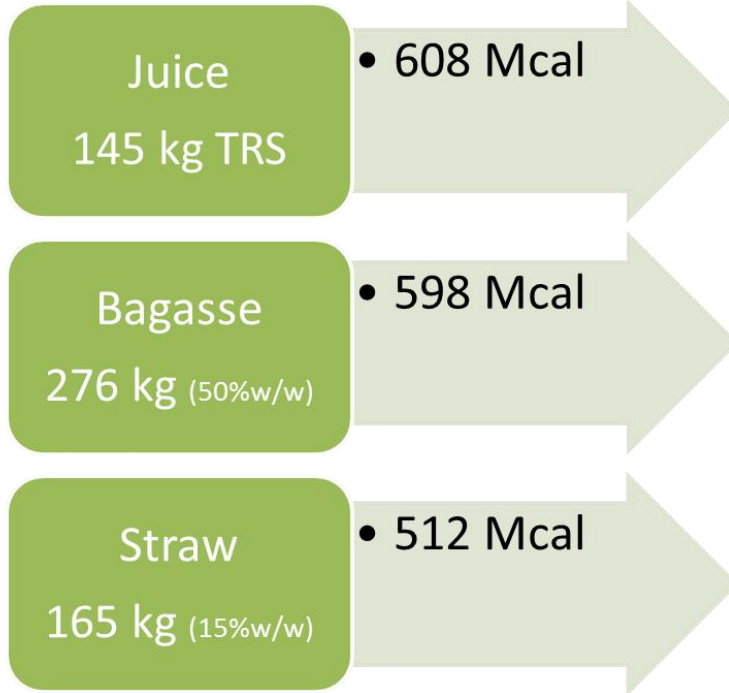
4.500.000.000 t/y



1500 t/y



Gestão adequada do Sol, Solo e Água permitirá a substituição gradual do Petróleo e é uma excelente oportunidade para Áreas Tropicais



1718 Mcal



1 t Cana de Açúcar ~ 1,2 Barris

Variabilidade

Eficiência Fotossintética

| Plant | Efficiency |
|------------------|--|
| Typical Plants | 0.1% ^[2] 0.2–2% ^[3] |
| Typical Cultures | 1–2% ^[2] |
| Cane | 7-8% peak ^{[2][4]} |





X



=

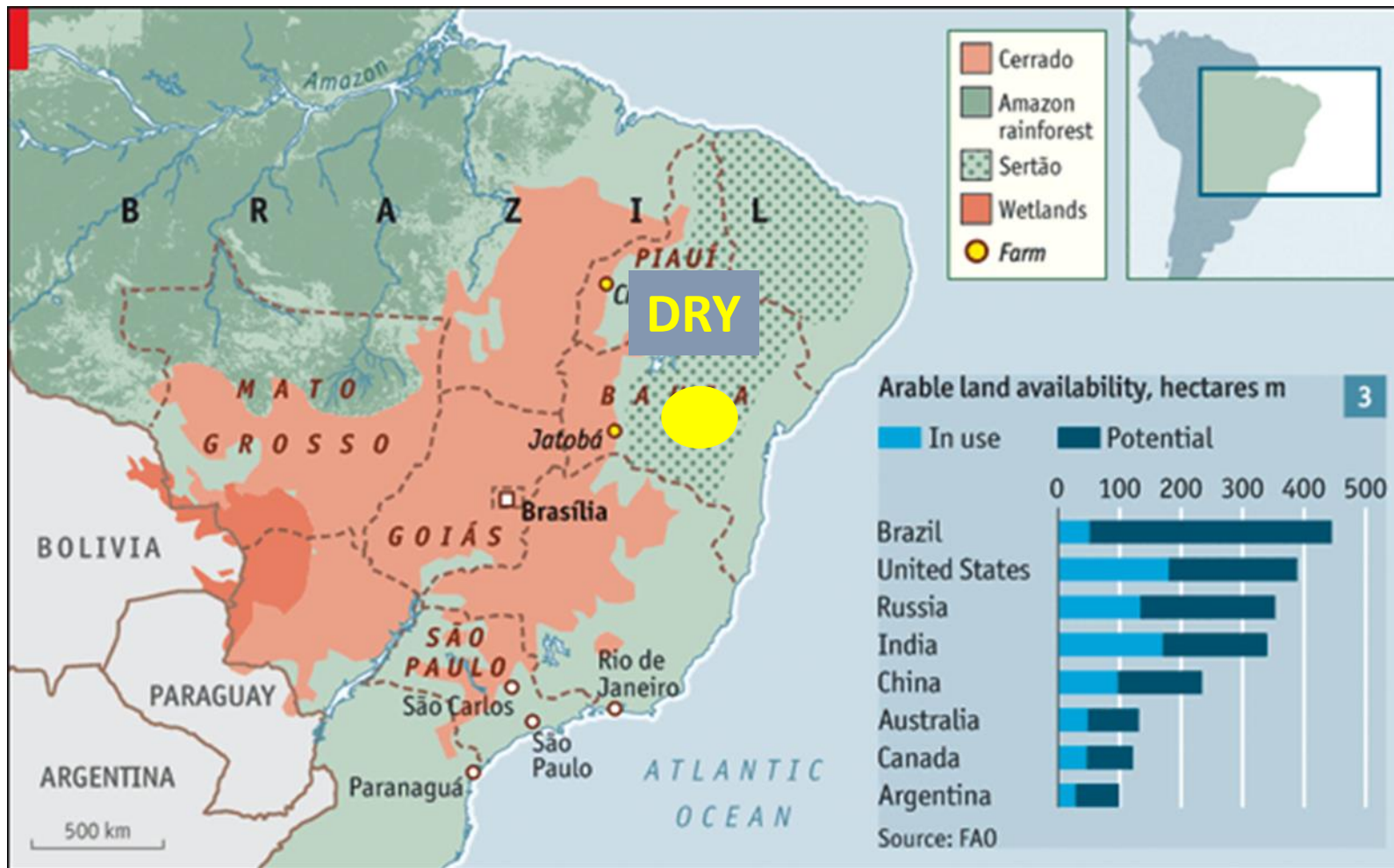


S. officinarum

S. spontaneum

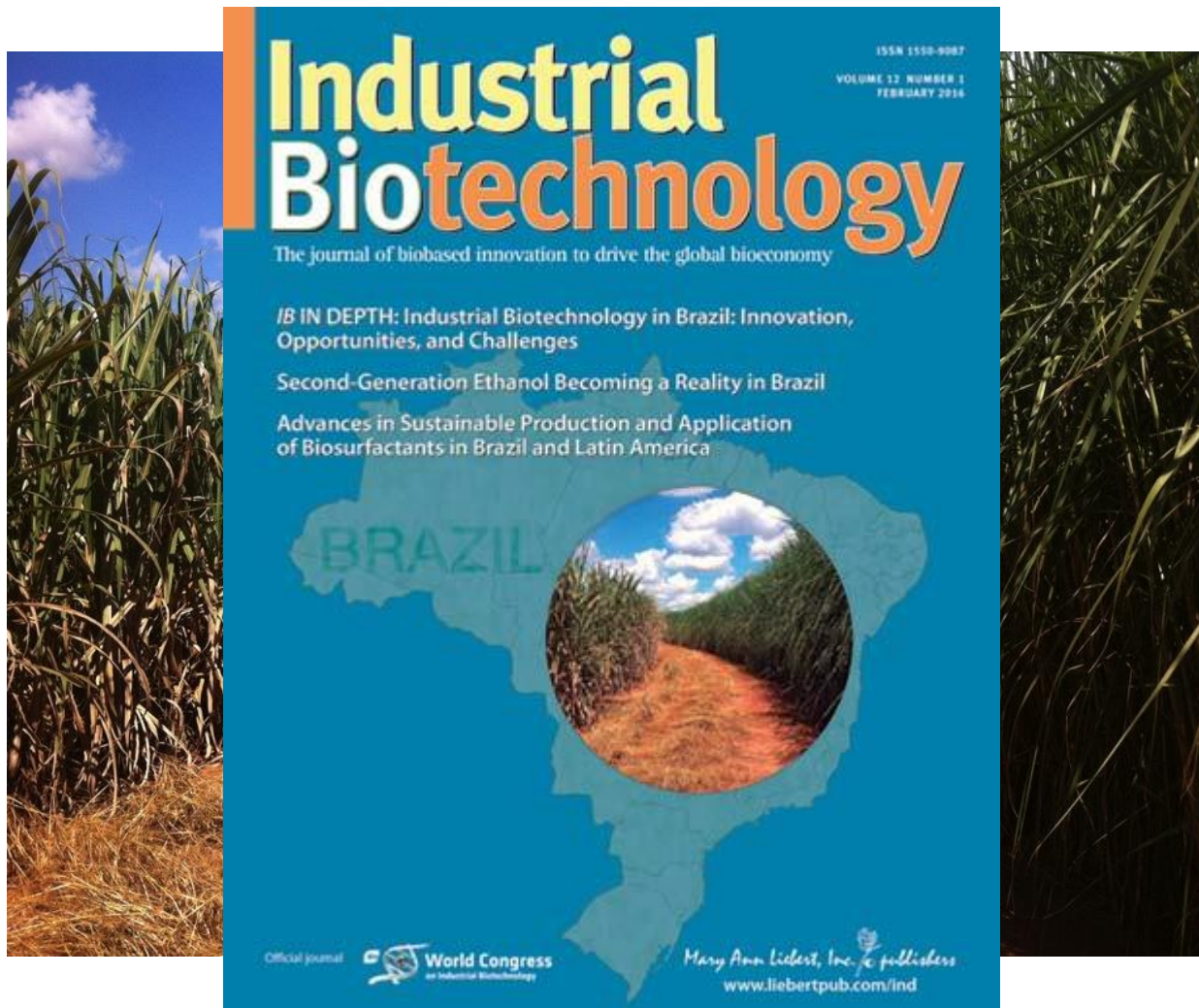


Zé UNIT

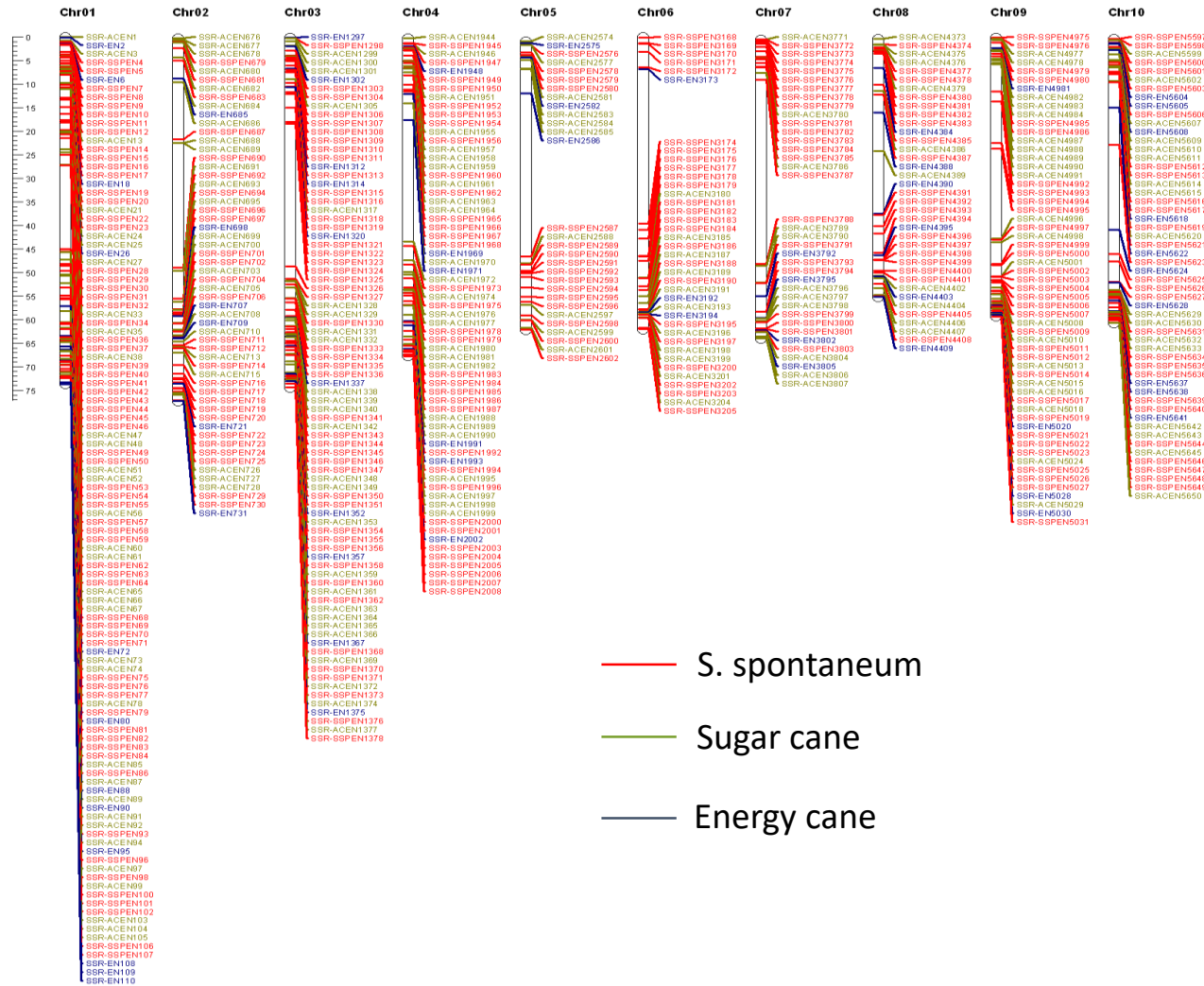






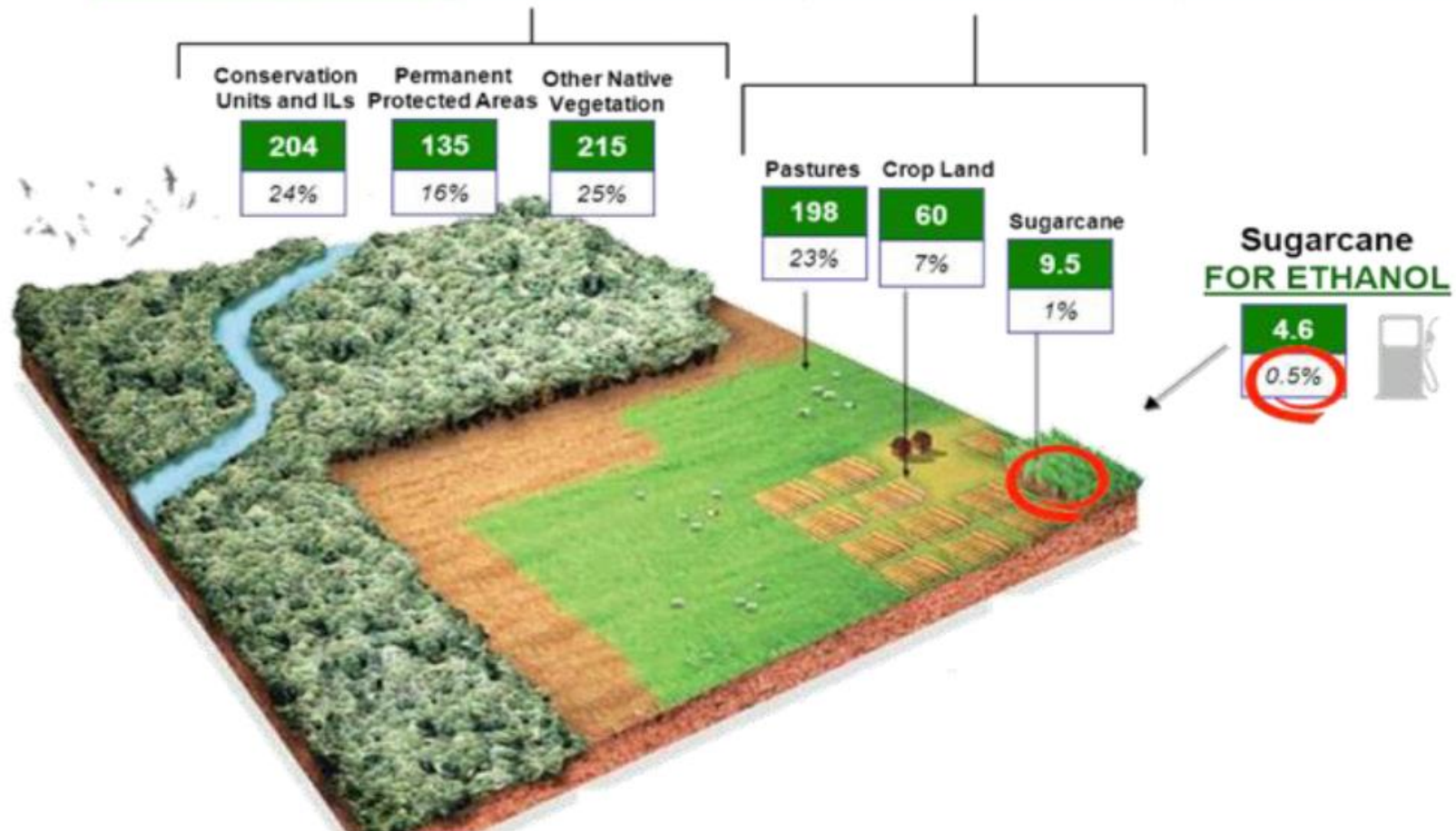




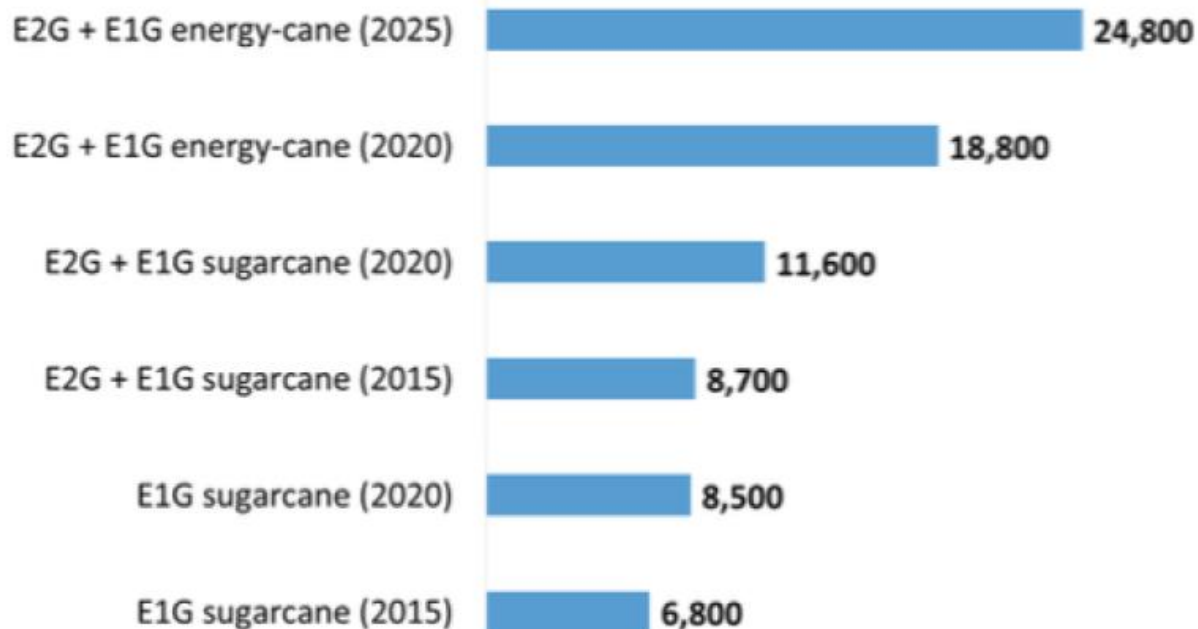


Million Hectares

| Total Area | Native Vegetation | Land in Actual Use | Other Uses |
|------------|-------------------|--------------------|------------|
| 851 | 554 | 258 | 38 |
| 100% | 65% | 30% | 5% |



Ethanol productivity (liters/ha)



| Area Requirement Analysis | |
|--|----------------------|
| Global Gasoline Consumption | 1,3tri liters/year |
| EtOH Equivalent | 1,86 tri liters/year |
| Required Area E2G + E1G Energy Cane (2025) | 75MM hectares |
| Required Area E2G + E1G Energy Cane (2020) | 100MM hectares |

50% do Pasto = 200 MM ha, que podem produzir

Consumo Global de Gasolina



Cultivar Petróleo



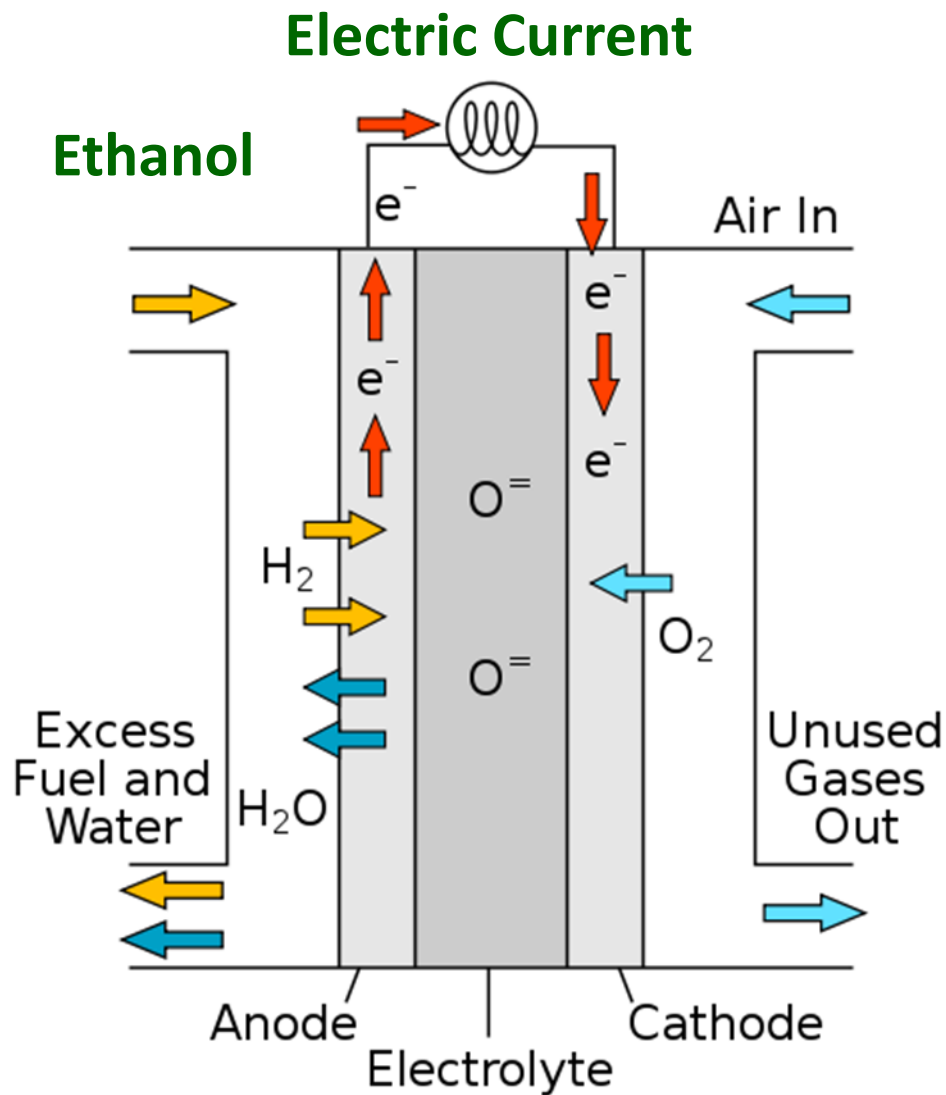




Integral Energy Cane

Straw

Bagasse





NissanNews.com | USA
Official Media Newsroom

[Email Alerts](#) | [Media Contacts](#) | [InfinitiNews.com](#)

Markets ▾

Search Newsroom



MODELS

NEWS

GALLERIES

CORPORATE

PRESS KITS

BASKET 0 ITEMS



[Home](#) > [Photos](#)




Nissan unveils world's first Solid-Oxide Fuel Cell vehicle

YOKOHAMA, Japan (August 4, 2016) – In Brazil today, Nissan Motor Co., Ltd. today revealed the world's first Solid Oxide Fuel-Cell (SOFC)-powered prototype vehicle that runs on bio-ethanol electric power. The breakthrough model is an all-new light-commercial vehicle that can rely on multiple fuels – including ethanol and natural gas – to produce high-efficiency electricity as a power source.

  1920 x 1080

  1200 x 1200

SHARE 

COPY EMBED HTML 





raízen

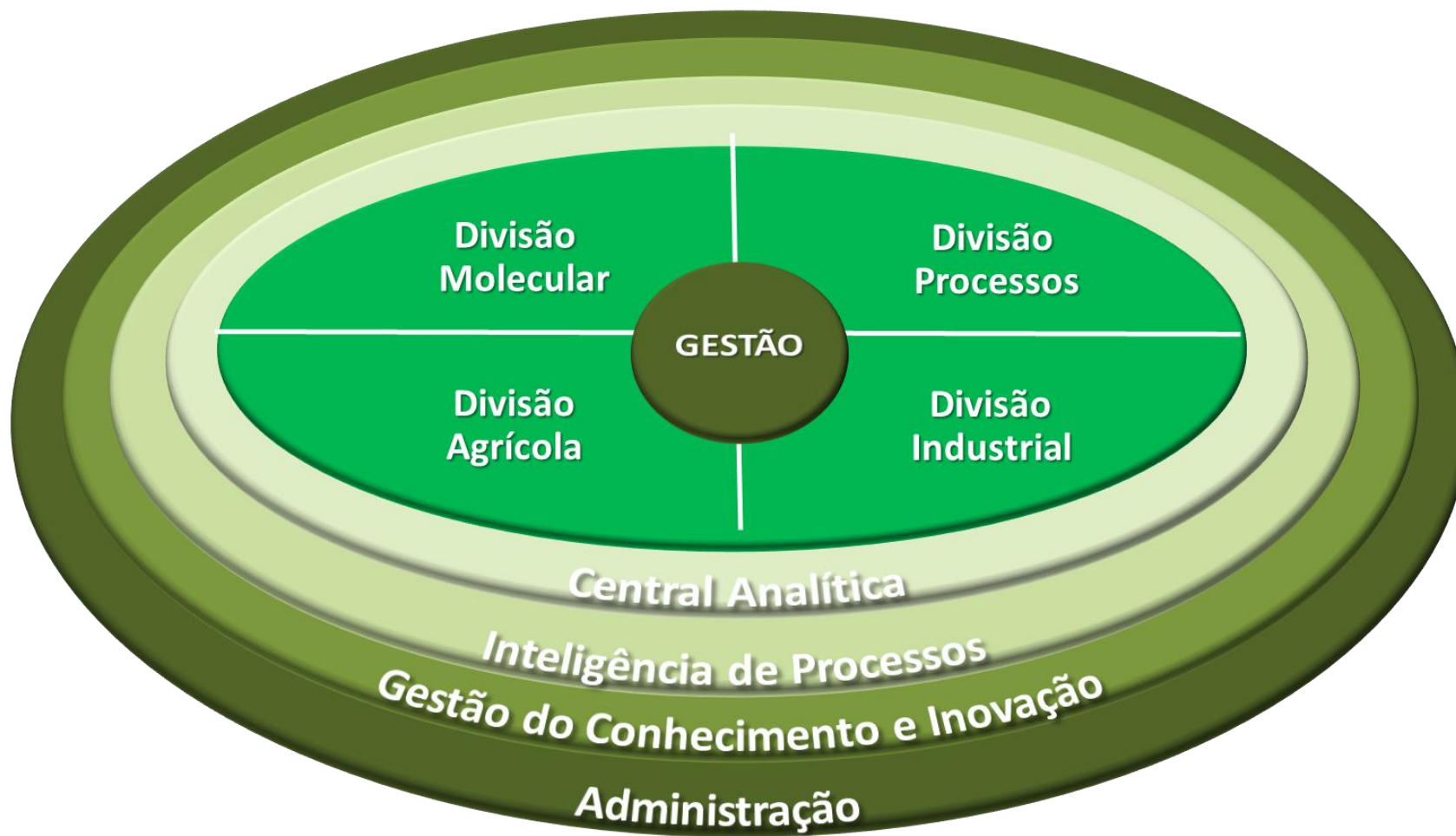




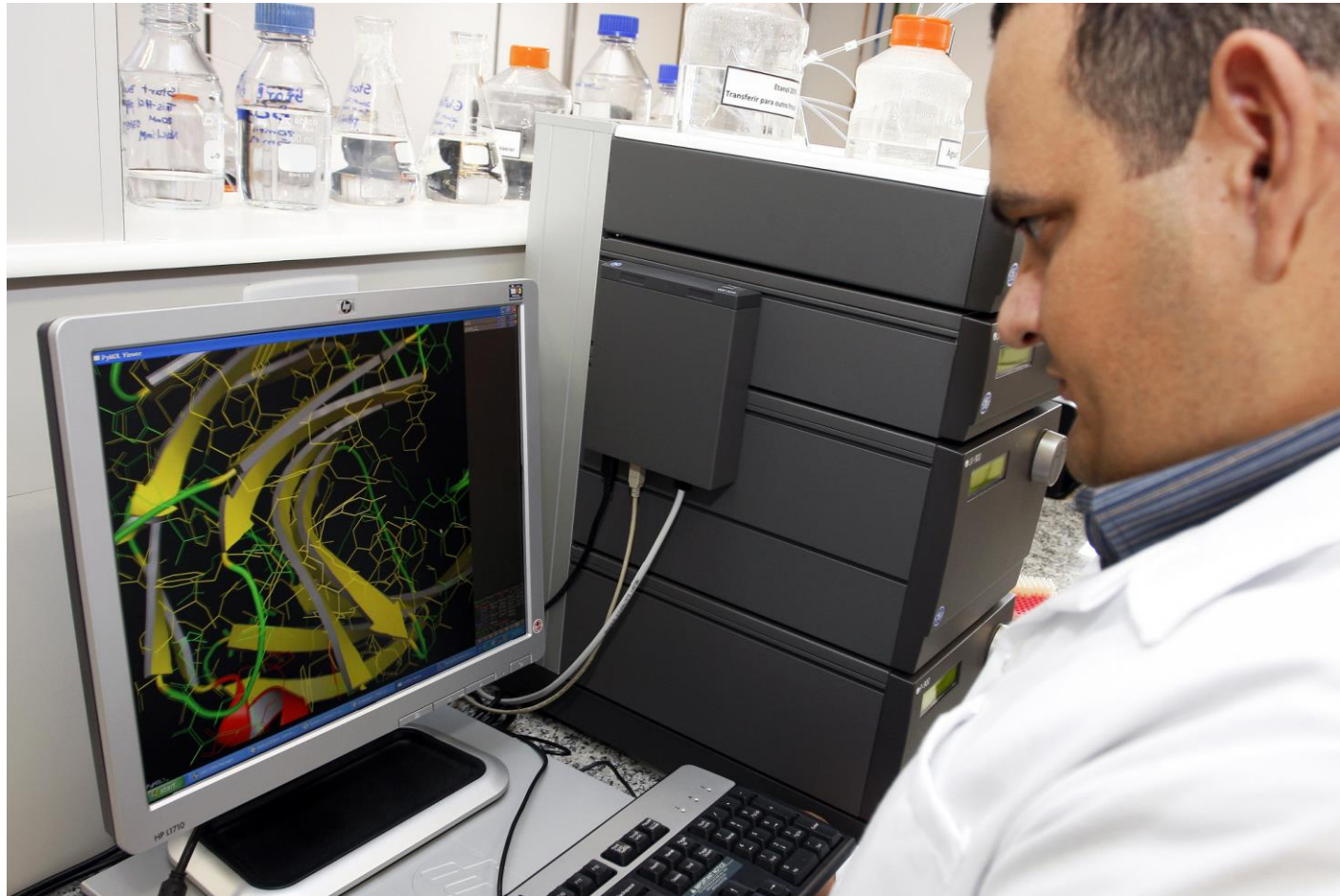


CTBE



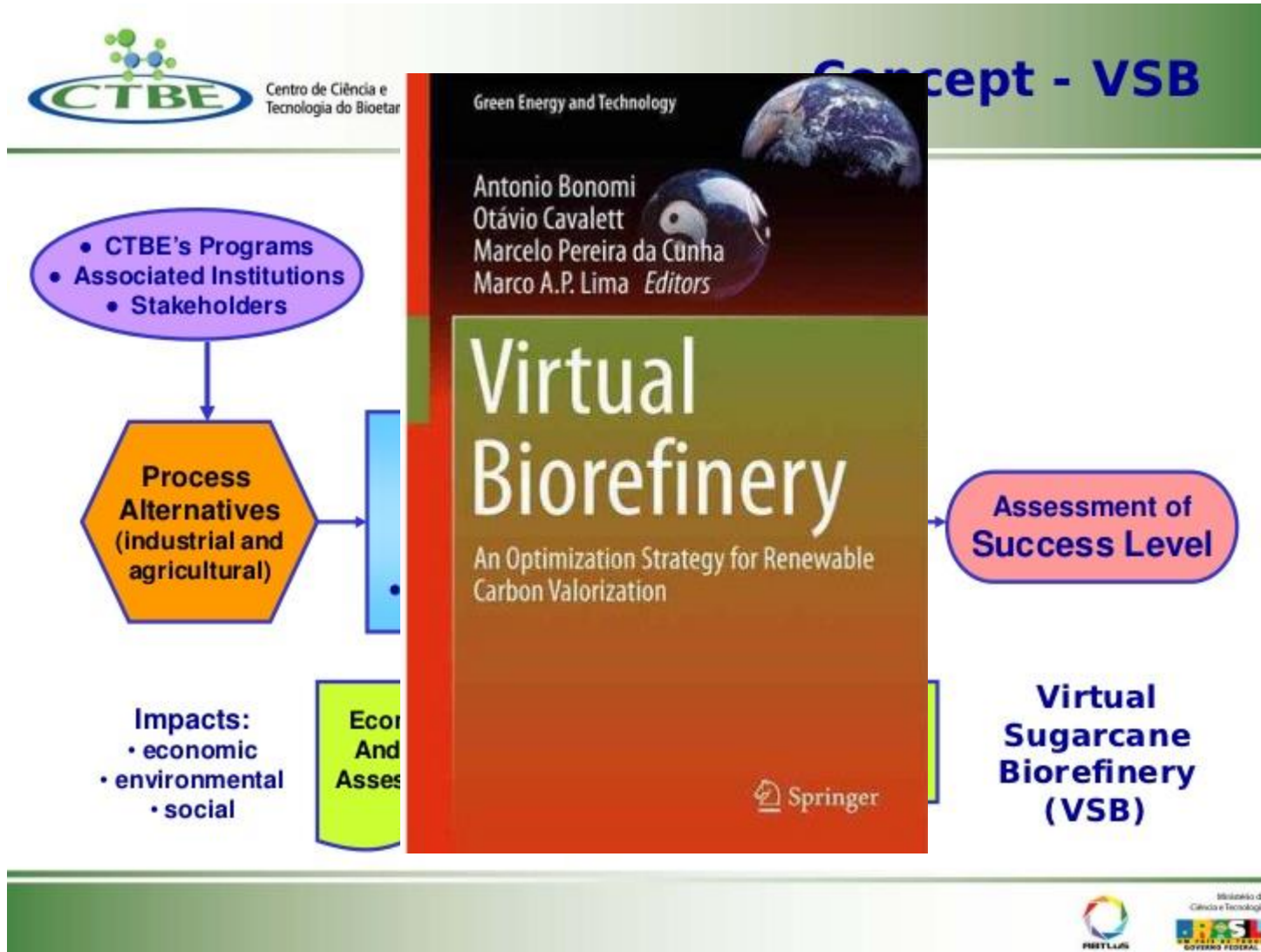












Período

- De 19 a 30 de junho

Programação

- Familiarização com o **Aspen Plus**
- Familiarização com a **Biorrefinaria Virtual de Cana-de-açúcar – BVC** (área agrícola + setor industrial), com estudos de casos

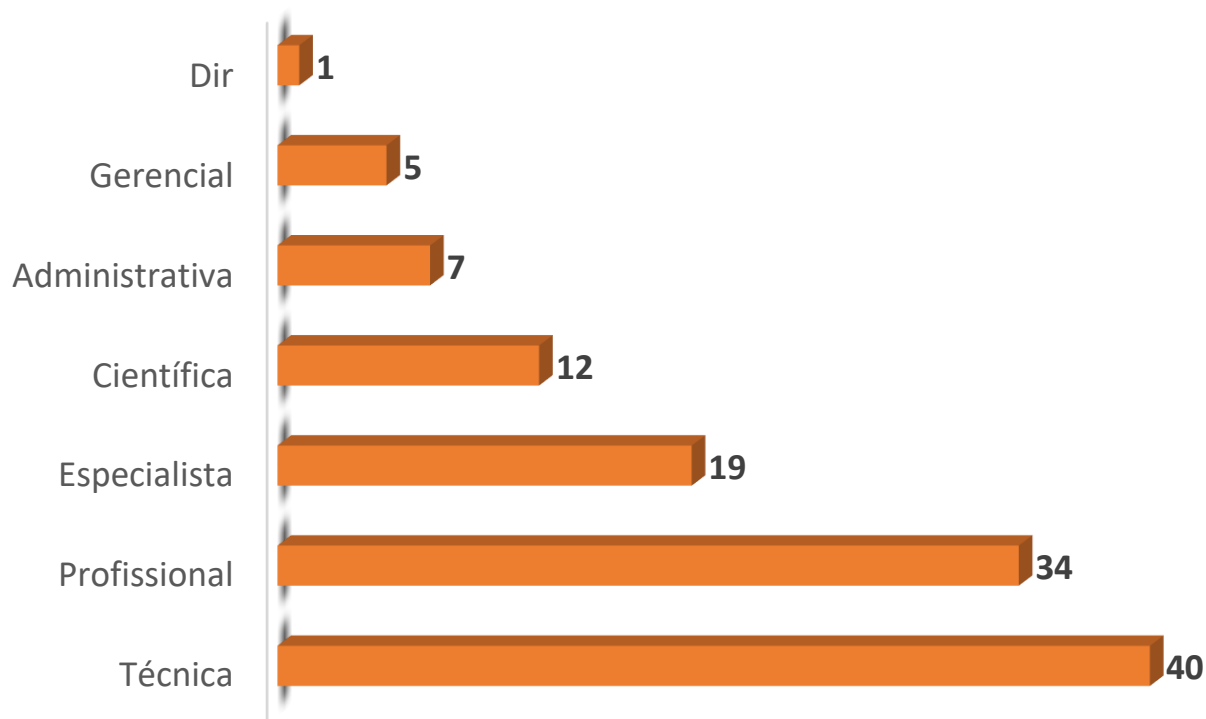
Objetivos

- Capacitação de pesquisadores e profissionais da indústria
- Criação de **novas oportunidades de parceria** com empresas e instituições do Nordeste

Mais informações em breve!

| Categorias | Total |
|---------------|-------|
| Pós Doutorado | 15 |
| Doutores | 26 |
| Mestres | 16 |
| Graduados | 34 |
| Técnicos | 24 |
| Assistentes | 7 |
| | 122 |

Organização por Carreira



Ranking mundial de trabalhos indexados (2013)

| Rank | Country | Papers | % of total papers in the world |
|-----------|---------------|---------------|--------------------------------|
| 1 | USA | 378.625 | 27,0 |
| 2 | CHINA | 219.281 | 15,6 |
| 3 | GERMANY | 102.271 | 7,3 |
| 4 | ENGLAND | 94.660 | 6,8 |
| 5 | JAPAN | 78.447 | 5,6 |
| 6 | FRANCE | 70.732 | 5,0 |
| 7 | CANADA | 62.804 | 4,5 |
| 8 | ITALY | 61.963 | 4,4 |
| 9 | SPAIN | 55.096 | 3,9 |
| 10 | AUSTRALIA | 53.296 | 3,8 |
| 11 | INDIA | 51.660 | 3,7 |
| 12 | SOUTH KOREA | 51.051 | 3,6 |
| 13 | BRAZIL | 38.523 | 2,7 |
| 14 | NETHERLANDS | 37.570 | 2,7 |
| 15 | RUSSIA | 29.077 | 2,1 |
| 16 | TAIWAN | 27.699 | 2,0 |
| 17 | SWITZERLAND | 27.325 | 1,9 |
| 18 | TURKEY | 25.510 | 1,8 |
| 19 | IRAN | 25.415 | 1,8 |
| 20 | SWEDEN | 24.416 | 1,7 |

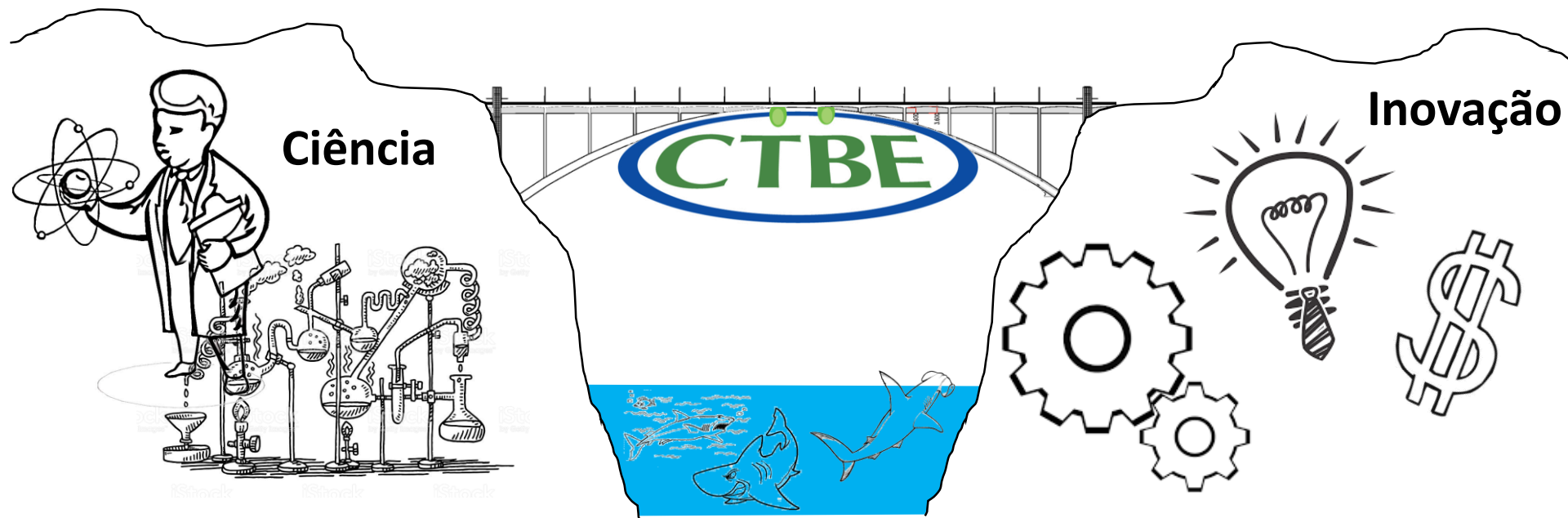
InCites™, Thomson Reuters (2012).
Report Created: Jul 4, 2015 Data
Processed March 18, 2015 Data
Source: Web of Science

SB
PC

Global Innovation Index - 2015

| POSITION | COUNTRY | % RANK |
|-----------|--------------------------|-------------|
| 1 | Switzerland | 1.00 |
| 2 | United Kingdom | 0.99 |
| 3 | Sweden | 0.99 |
| 4 | Netherlands | 0.98 |
| 5 | United States of America | 0.97 |
| 6 | Finland | 0.96 |
| 7 | Singapore | 0.96 |
| 8 | Ireland | 0.95 |
| 9 | Luxembourg | 0.94 |
| 10 | Denmark | 0.94 |
| 11 | Hong Kong (China) | 0.93 |
| 12 | Germany | 0.92 |
| 13 | Iceland | 0.91 |
| 14 | Korea, Republic of | 0.91 |
| 15 | New Zealand | 0.90 |
| 16 | Canada | 0.89 |
| 17 | Australia | 0.89 |
| 18 | Austria | 0.88 |
| 19 | Japan | 0.87 |
| 20 | Norway | 0.86 |
| 21 | France | 0.86 |
| 22 | Israel | 0.85 |
| 29 | China | 0.8 |
| 30 | Portugal | 0.79 |
| 31 | Italy | 0.79 |
| 42 | Chile | 0.71 |
| 51 | Costa Rica | 0.64 |
| 52 | Viet Nam | 0.64 |
| 60 | South Africa | 0.58 |
| 67 | Colombia | 0.53 |
| 68 | Uruguay | 0.52 |
| 69 | Oman | 0.51 |
| 70 | Brazil | 0.51 |
| 71 | Peru | 0.50 |
| 72 | Argentina | 0.49 |

Cornell University, INSEAD, and
WIPO (2015): *The Global
Innovation Index 2015: The
Local Dynamics of Innovation*,
Geneva, Ithaca, and
Fontainebleau.





Parceiros



Workshop Estratégico:

Desafios e Perspectivas do Setor Sucroenergético no Nordeste

30/Março | 8h30 - 18h | CTBE

| | | | |
|--|---|--------------------------------|-------------------------------|
| AGCO | FERMENTEC | LNLS | UFPB |
| AGRICEF | FGV-EAESP | MAPA | UFRPE |
| AGROCANA | FINEP | MCTIC | UFSCAR |
| BANCO DO NORDESTE | FINGUERUTEC BIOECONOMIA | NEW HOLLAND | UNICAMP |
| BNDES | GEO ENERGÉTICA | PENEDO AGRO INDUSTRIAL SA | UFAL |
| Caldema | GRANBIO | PETROBRAS | USINA CAETÉ SA |
| CETENE | GRUPO OLHO D'ÁGUA | PROMAC EQUIPAMENTOS | USINA MONTE ALEGRE S/A |
| CITROTEC | GTM Assessoria | RAIZEN ENERGIA | USINA PETRIBU S/A |
| CNPEM | HPB ENERGIA | SÃO JOSÉ AGROINDUSTRIAL | USINA SÃO JOSÉ AGROINDUSTRIAL |
| CONFEDERAÇÃO DA AGRICULTURA E PECUÁRIA DO BRASIL - CNA | IAC | SECRETARIA DA AGRICULTURA - AL | USINA TRAPICHE |
| CTBE | IDEP - INSTITUTO UFPB DE DESENVOLVIMENTO DA PARAIBA | SINDAÇÚCAR (PE) | YARA BRASIL FERTILIZANTES |
| DEDINI S/A INDUSTRIAS DE BASE | ISI BIOMASSA | STAB | ZILOR ENERGIA E ALIMENTOS |
| EMPRAL PIRACICABA | ITC | SYGLIA | |
| EPE EMPRESA DE PESQUISA ENERGÉTICA | JAPUNGU AGROINDUSTRIAL S/A | UDOP | |
| | | | |