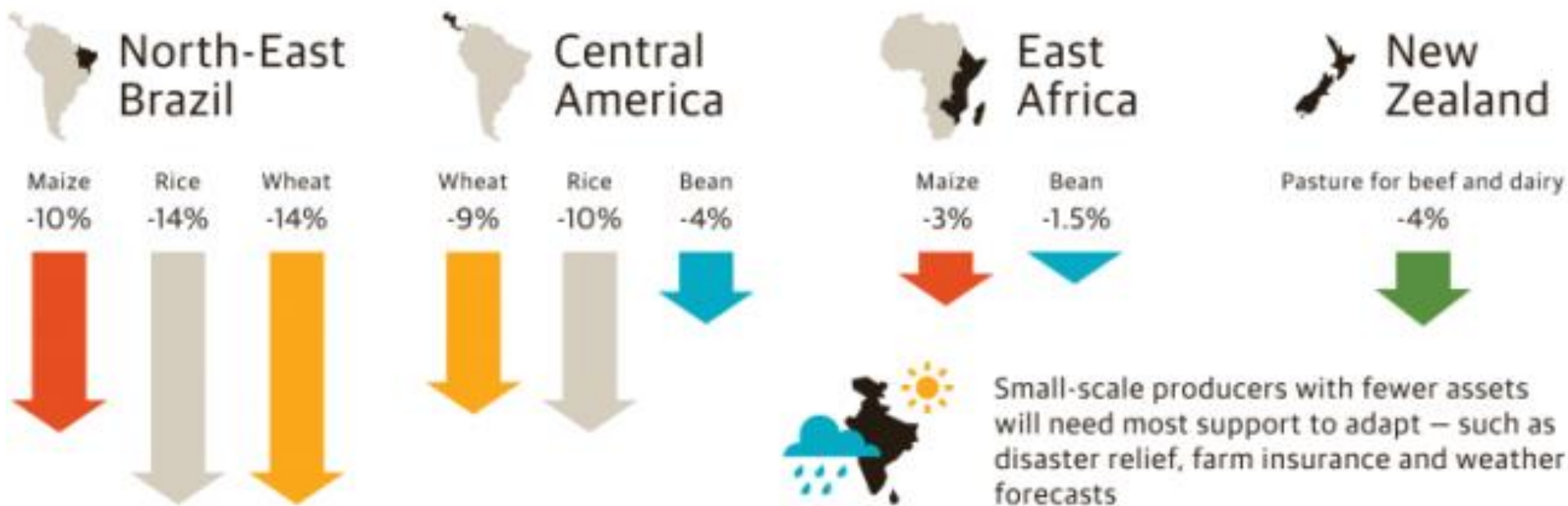


Cadeia produtiva da macaúba no estado de Minas Gerais

*Prof. Sérgio Yoshimitsu Motoike
Universidade Federal de Viçosa
motoike@ufv.br*

Futuro da alimentação e da agricultura nos anos de 2030

Crop and pasture yields are likely to decline in many places



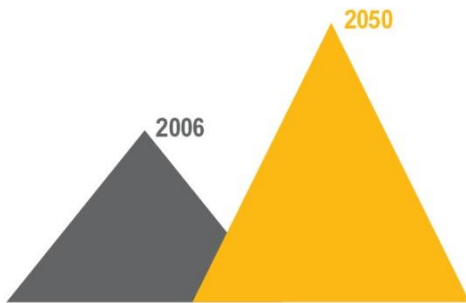
Fonte: Porter *et al.* Food security and food production system. In : Climate change 2014: impact, adaptation and vulnerability

O mundo em 2050

THE GREAT BALANCING ACT

The world must achieve a “great balancing act” in order to sustainably feed 9.6 billion people by 2050. Three needs must be met at the same time.

CLOSING THE FOOD GAP



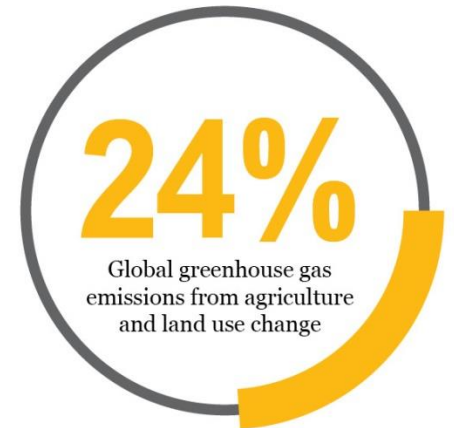
69% Required increase in food calories to feed 9.6 billion people by 2050

SUPPORTING ECONOMIC DEVELOPMENT

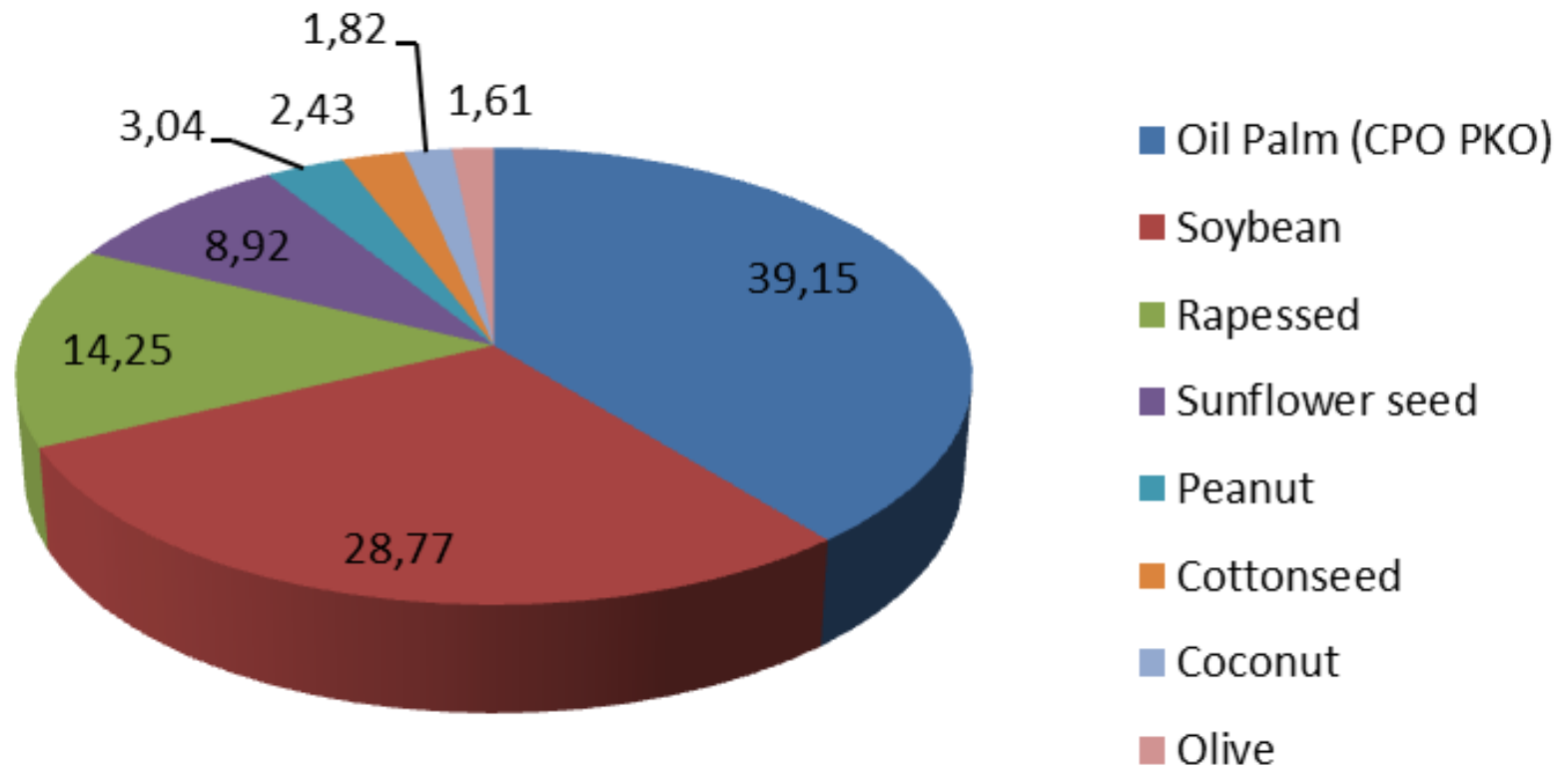


28% Global population directly or indirectly employed by agriculture

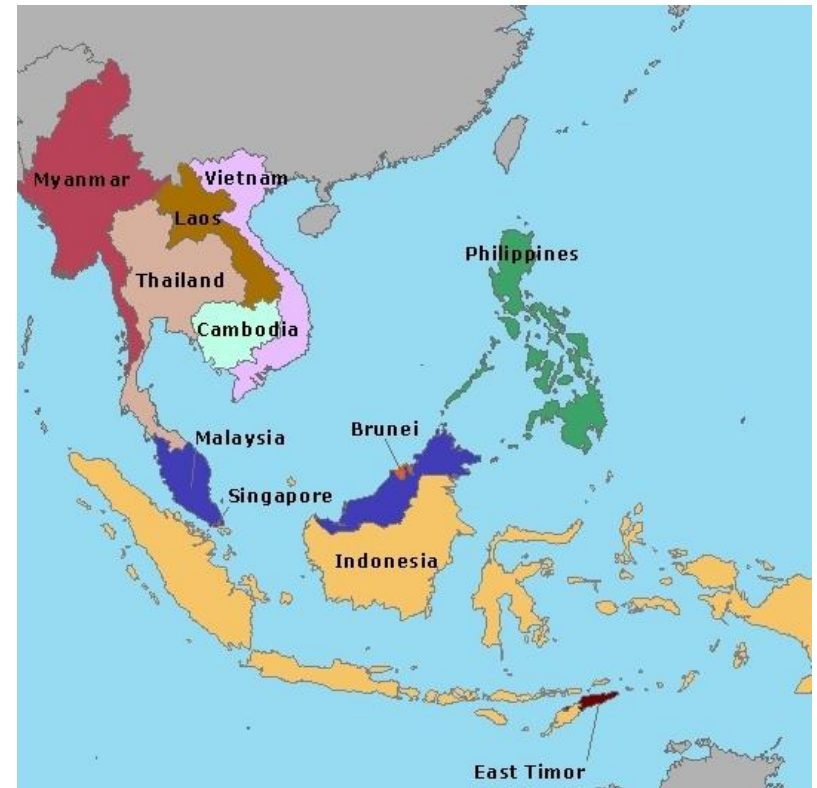
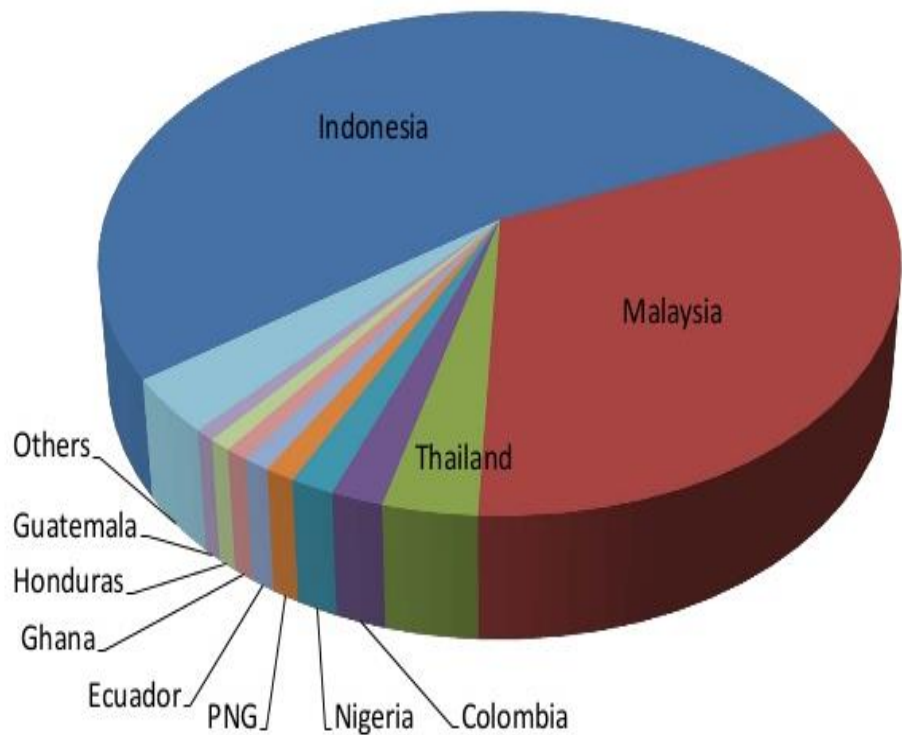
REDUCING ENVIRONMENTAL IMPACT



Participação das oleaginosas na produção de óleo em 2016-2017 (%)



Oil palm production by country



≈ 90% concentration in Southeast Asia

Macauba palm is a new oil crop

African Oil palm



Elaeis guineensis

2000mm

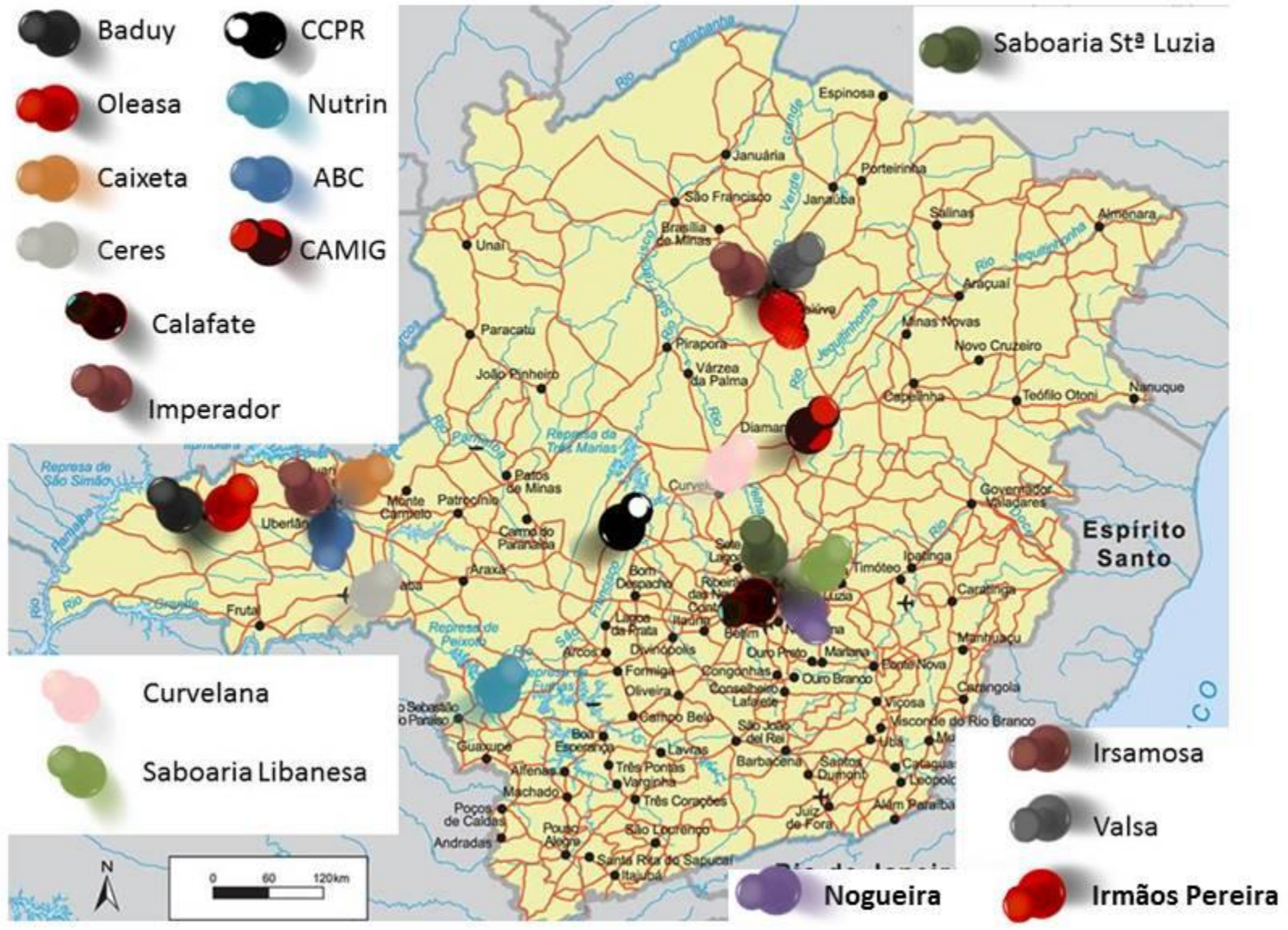
Macauba palm



Acrocomia aculeata

1000mm

Empresas extrativistas processadoras de macaúba em 1980 em Minas Gerais



NOVAS EMPRESAS EXTRATIVISTAS

- ★ Capital Federal
- Capital de Estado
- Cidade
- ✈ Aeroporto
- ✈ Porto
- Limite de Estado
- Principais rodovias
- Rios



UBCM

Cocal do Brasil

Dibio

Paradigma

Efficiency and quality of the products are the bottlenecks



Investimentos em cultivo agrícola

- ★ Capital Federal
- Capital de Estado
- Cidade
- ✈ Aeroporto
- Porto
- Limite de Estado
- Principais rodovias
- Rios



DOMESTICAÇÃO DA MACAÚBA

TECNOLOGIA
PRODUÇÃO

ESTUDO POTENCIAL SÓCIO
ECONÔMICO E AMBIENTAL

GENÉTICA

Propagação

Plantio e
manejo

Colheita e
pós-colheita

AUMENTO DA FUNÇÃO SOCIAL

PROJETOS

- ✓ PILOTO
- ✓ AGRÍCOLA
- ✓ INDUSTRIAL

CADEIA PRODUTIVA

GANHO DE PRODUTIVIDADE

Populações bases
produção sementes

Populações
melhoradas
produção sementes

Desenvolvimento
de clones

Propagação Seminífera



Tecnologia
UFV
PI
0703180-7

Sistema de plantio









Social function of the land is restored

A photograph of a palm tree in a field. The tree has a dark, textured trunk and a large, yellow, fan-shaped inflorescence. A white tag with the number '36' is attached to the trunk. The background shows other palm trees and a grassy field under an overcast sky.

Progressos e desafios

GENÉTICA E MELHORAMENTO

183 Un. conservação

Área: 2.096.648 ha

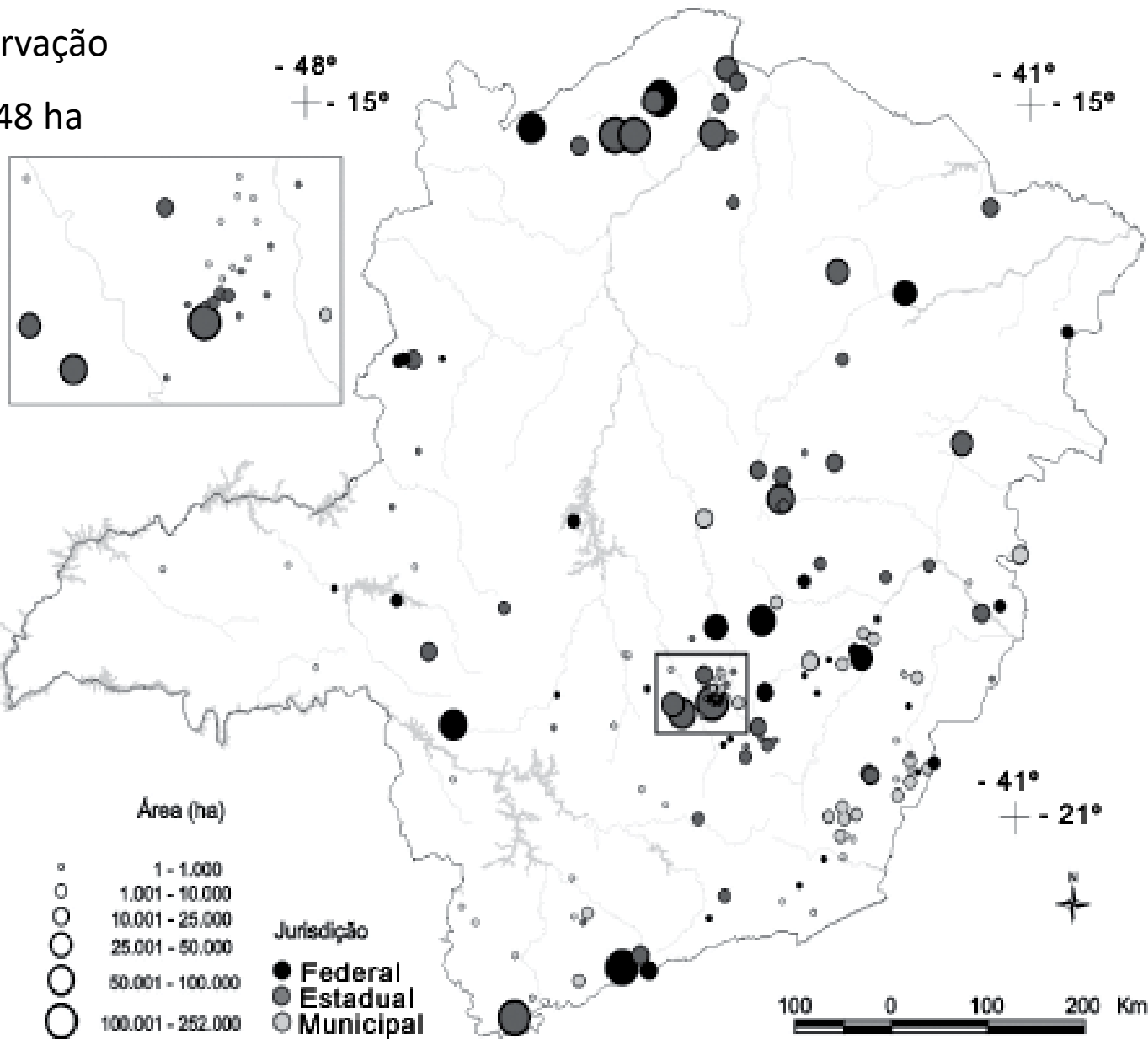
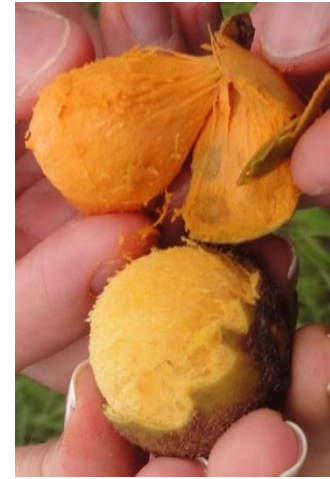


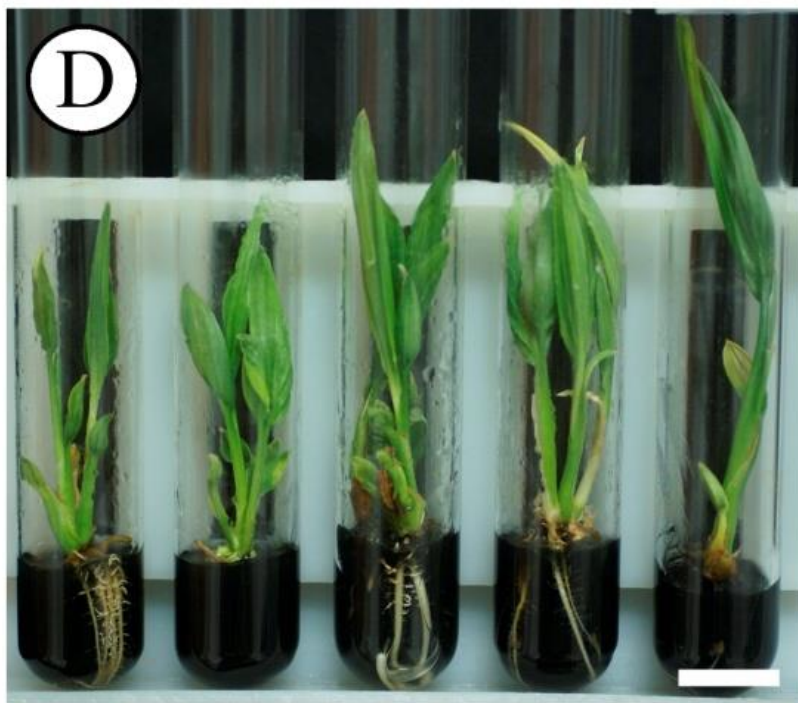
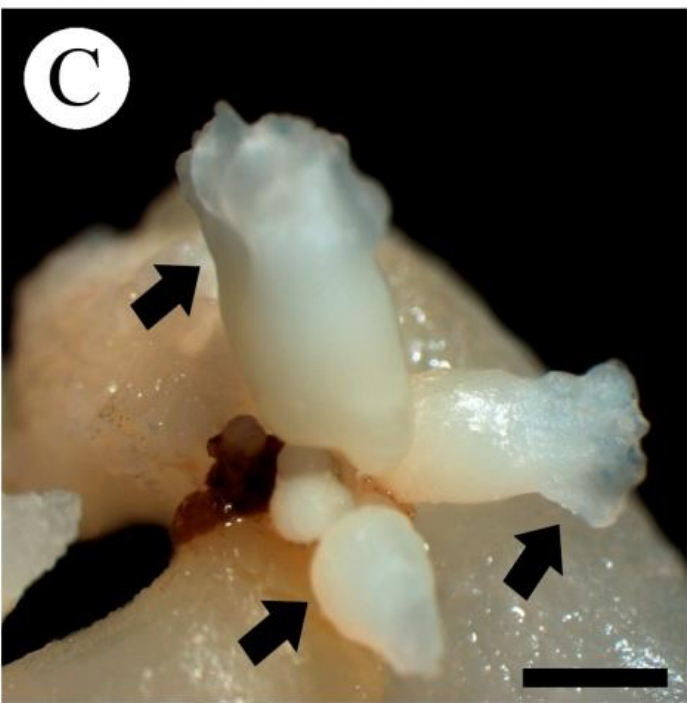
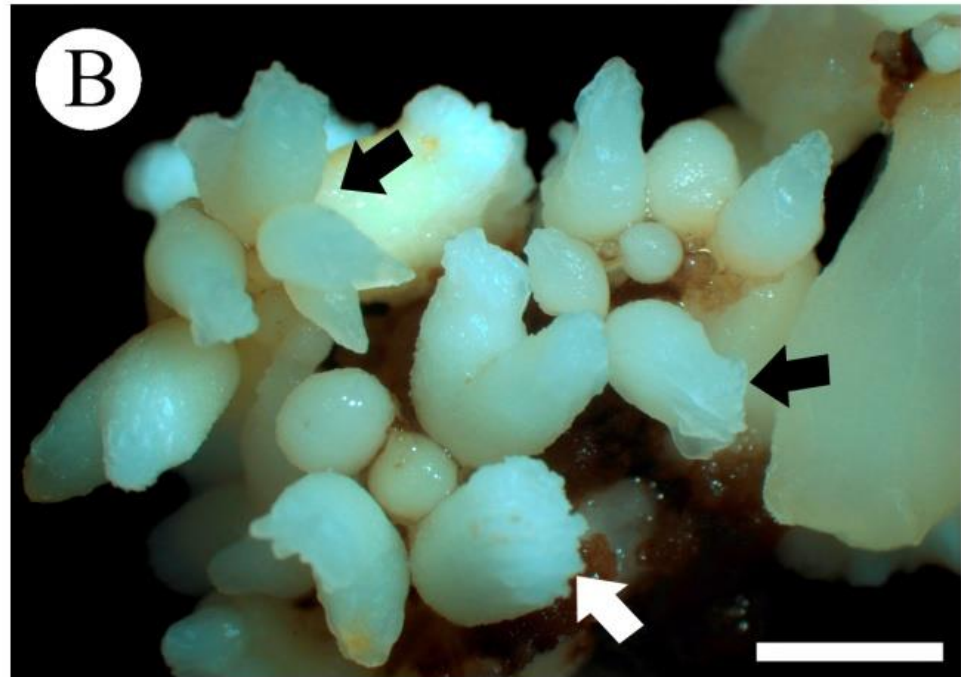
Figura 1 – Distribuição das unidades de conservação em Minas Gerais.

Figure 1 – Distribution of conservation units in Minas Gerais.

Banco de germoplasma

✓ Variabilidade genotípica e fenotípica





Obrigado pela atenção!

